

SURFACE PUMPS

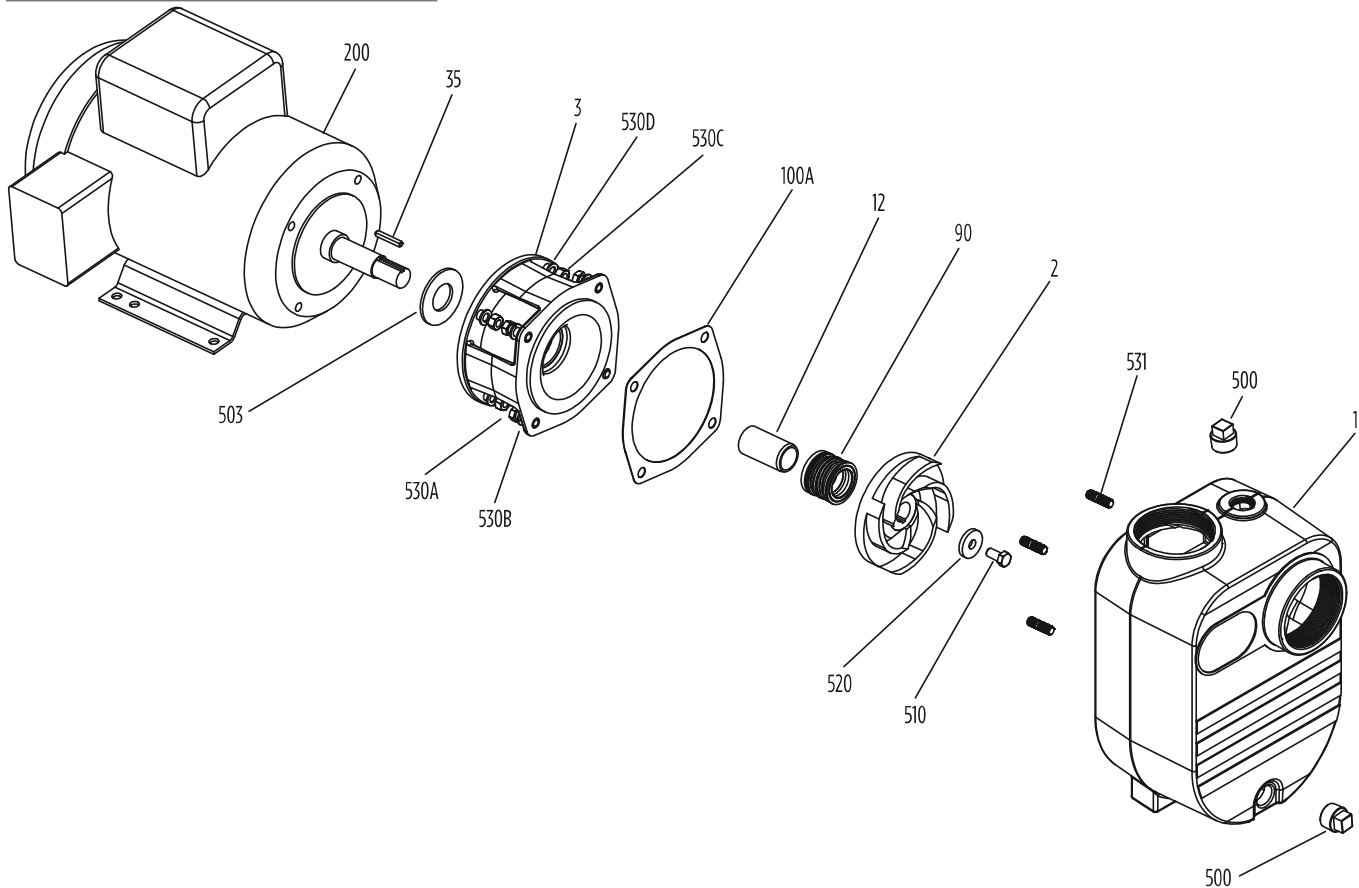
SELF-PRIMING

MENU



CLOSE-COUPLED - FBSEF

MATERIALS AND PARTS



MATERIALS AND PARTS

Fig. No.	Part Description	Part No.					Materials of Construction
		FBSEF-150	FBSEF-200	FBSEF-300	FBSEF-500	FBSEF-750	
1	Pump Case	305715001	305460001		305460002		Cast iron, ASTM-A48 CL30
2	Impeller	305453053	305715003	305715004	305715005	305715006	Cast iron, ASTM-A48 CL30
3	Motor Adapter	305715007	305715008		305715009		Cast iron, ASTM-A48 CL30
12	Mech. Seal Shaft Sleeve	N/A	N/A	N/A	305458011		416 stainless steel
35	Shaft Key	N/A	N/A	N/A	305451003		301 stainless steel
90	Mechanical Shaft Seal	305463029			305463043		Carbon/ceramic x FKM-SS
100A	Case Gasket	305463133	305463124		305463126		EPDM
200	Motor	See Motor Selection					Misc.
500	Pipe Plug 3/4" NPT (3-pack)	305463050					CAD-plated steel
503	Water Slinger	305453005			305453030		Neoprene
510	Impeller Hex Bolt	N/A	N/A	N/A	305463077		416 stainless steel
520	Impeller Washer	N/A	N/A	N/A	305463187		303 stainless steel
530A	Hex Cap Screw - Motor (8-/12-pack)	305463030			305463010		Zinc-plated steel
530B	Flat Washer/ Lockwasher - Volute (8-pack)	305453006			305463032		Zinc-plated steel
530C	Hex Nut - Volute (8-pack)	N/A	N/A	N/A	305463033		Zinc-plated steel
530D	Lockwasher - Motor Adapter (8-pack)	N/A	N/A	N/A	305463032		Zinc-plated steel
531	Hex Bolt/Threaded Stud (4-pack)	305463253			305463129		300-series stainless steel