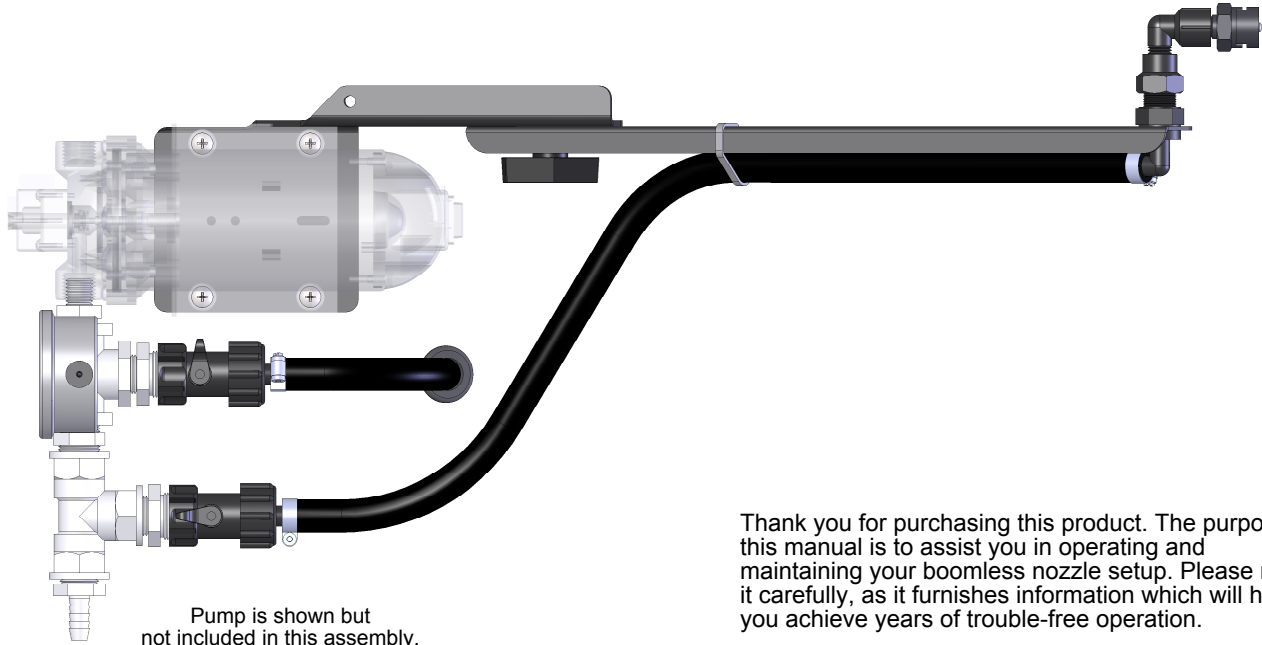


OWNER'S MANUAL

Model: BASPOTSPRAYERK (5302060)

(Bolt-On Boomless Nozzle Assembly for Spot Sprayers with 'Top-Mounted' pumps)



Thank you for purchasing this product. The purpose of this manual is to assist you in operating and maintaining your boomless nozzle setup. Please read it carefully, as it furnishes information which will help you achieve years of trouble-free operation.

BEFORE RETURNING THIS PRODUCT FOR ANY REASON, PLEASE CALL

HOPKINSVILLE, KY: 800-637-7172

DOTHAN, AL: 800-227-4098

GREENWOOD, MS: 800-844-4524

IF YOU SHOULD HAVE A QUESTION OR EXPERIENCE A PROBLEM WITH YOUR AG SPRAY PRODUCT GIVE US A CALL.

BEFORE YOU CALL, PLEASE HAVE THE FOLLOWING INFORMATION AVAILABLE: SALES RECEIPT & MODEL NUMBER. IN MOST CASES, AN AG SPRAY EMPLOYEE CAN RESOLVE THE PROBLEM OVER THE PHONE.

Warranty/Parts/Service

Products are warranted for one year from date of purchase against manufacturer or workmanship defects.

Commercial users have a 90 day warranty.

Your authorized dealer is the best source of replacement parts and service. To obtain prompt, efficient service, always remember to give the following information...

- Correct Part Description and/or part number.
- Model number/Serial number of your sprayer.

Part descriptions and part numbers can be obtained from the illustrated parts list section(s) of this manual.

Whenever you need parts or repair service, contact your distributor/dealer first. For warranty work, always take your original sales slip, or other evidence of purchase date, to your distributor/dealer.

Features/Benefits

- Nozzle features a multi-patented round covered orifice design which improves spray pattern & distribution.
- No small orifices or slots to get plugged up.
- 1/4" (MNPT) inlet threads (**Male National Pipe Thread**)
- Nozzle produces a very even, large droplet spray pattern.
- Superior wear & chemical resistance.
- Eliminates cumbersome boom 'arms'.
- Eliminate most 'normal' boom maintenance.
- Spray easily around obstacles & over uneven terrain
- All full pattern spray nozzles were tested at a height of 36 inches. (recommended operating height is between 18 & 48 inches.) These nozzles are designed to provide a full left-hand to right-hand spray pattern from a single centrally mounted nozzle.



www.agspray.com

1100 New Industry Lane
Hopkinsville, KY 42240
P: 800-637-7172
F: 270-885-7392

104 Eastman Street
Greenwood, MS 38930
P: 800-844-4524
F: 662-455-4442

1563 S. Oates Street
Dothan, AL 36301
P: 800-227-4098
F: 334-673-1974

Form No. 2002 [5008306 (11/10)] Printed in the U.S.A.

Nozzle Height Adjustment

Nozzles can be used at various heights within the recommended range. However, this will affect the spray pattern width and the gallons per acre (GPA) applied.

Adverse Wind Conditions

With boomless spray nozzles, as with other spraying methods, high or gusty wind conditions can cause drifting or pattern movements, adversely affecting spray coverage. If this occurs, wait for more favorable conditions before continuing.

Plumbing Requirements

Make sure that all plumbing components and feed lines can properly supply the nozzle or nozzles at their rated GPM and PSI. The type of pump used as well as the size and length of the feed line will also affect how efficiently the volume is delivered to the nozzle or nozzles. Minimum hose size and plumbing requirements are:

Nozzle Qty.	Nozzle Size	Hose Size
1	1/4" MNPT Nozzle	1/2" I.D. Hose
2	1/4" MNPT Nozzles	3/4" I.D. Hose
1	1/2" MNPT Nozzle	1" I.D. Hose
2	1/2" MNPT Nozzles	1" I.D. Hose
1	1" MNPT Nozzle	1-1/4" I.D. Hose
2	1" MNPT Nozzles	1-1/2" I.D. Hose

Proper Nozzle Operation

To insure proper nozzle operation all pressure readings must be taken directly before the nozzle or nozzles.

SPRAYING SAFETY:

ALWAYS WEAR PROTECTIVE CLOTHING WHEN SPRAYING AND/OR HANDLING ANY AND ALL CHEMICALS.

After Spraying

After use, fill your sprayer tank part way with water. Start your sprayer, and allow the clear water to be pumped through this plumbing system and out through the spray nozzle.

Refill your tank about half full with plain water and use FIMCO Tank Neutralizer and Cleaner, and repeat cleaning instructions above.

Flush your entire sprayer, including this boomless plumbing setup, with the neutralizing/cleaning agent, then flush out one more time with plain water. Follow the chemical manufacturer's disposal instructions of all wash or rinsing water.

For the boomless nozzle, remove the tip and screen from the nozzle assembly. Wash these items out thoroughly. Blow the orifice clean and dry. If the orifice remains clogged, clean it with a fine bristle (NOT WIRE) brush, or with a toothpick. Do not damage the orifice. Water rinse and dry the tips before storing. The screen at the tip (Item 24) is between the elbow (Item 19) and the adaptor (Item 3).

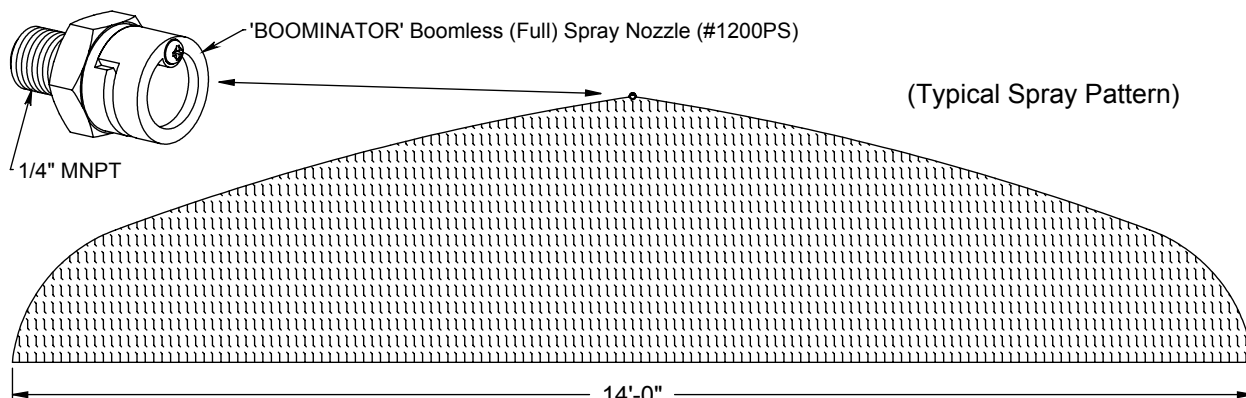
Winter Storage

Drain all water out of your sprayer, paying special attention to your pump, handgun, and valve(s). These items are especially prone to damage from chemicals and freezing weather.

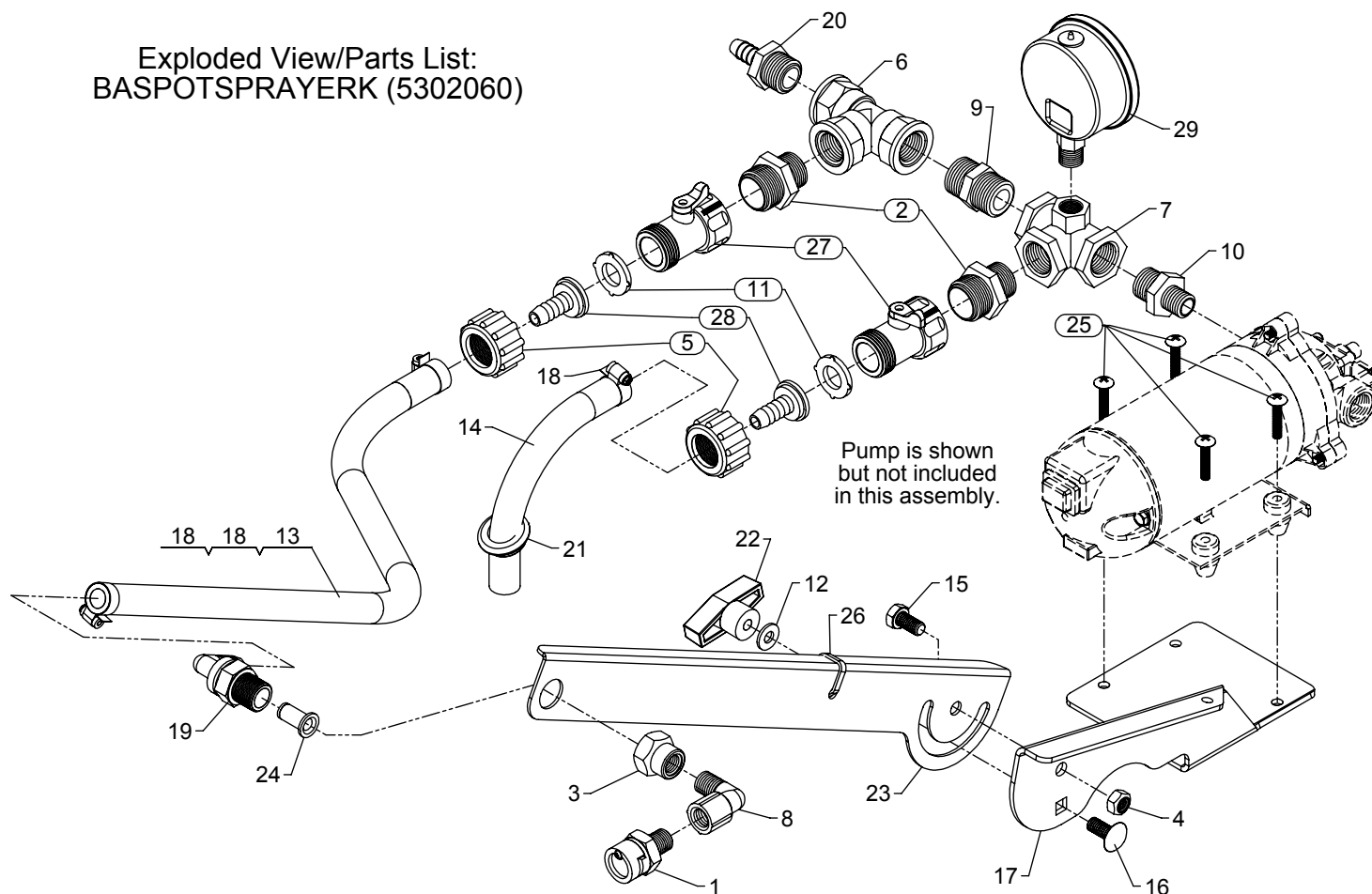
Your sprayer should be winterized before storage by pumping a solution of RV antifreeze through the entire plumbing system. This antifreeze solution should remain in the plumbing system during the winter months. When spring time comes and you are preparing your sprayer for the spray season, rinse the entire plumbing system out, clearing the lines of the antifreeze solution. Proper care and maintenance will prolong the life of your sprayer.

'BOOMINATOR' Boomless (Full) Spray Tip Model #1200PS

(1/4" MNPT)				Speed (MPH)						
Spraying Pressure	Flow Rate	Tested Height = 24"	Tested Height = 36"	1	2	3	4	5	6	7
PSI	GPM	Spray Distance	Spray Distance	Gallons Per Acre (GPA)						
20	1.0	12 Ft.	14 Ft.	35	18	12	9	7	6	5
30	1.2	12 Ft.	14 Ft.	42	21	14	10	8	7	6
40	1.4	12 Ft.	14 Ft.	49.5	25	16.5	12	10	8	7



Exploded View/Parts List: BASPOTSPRAYERK (5302060)



Assembly

Your assembly should contain all the components on the list. Double-check that everything is present.

This assembly is intended for use with sprayers that have the 12 volt pump mounted on 'top' of the tank. It also intended to be hooked up to a pump with 3/8" female pipe threads at the outlet port.

1. Remove your pump from the top of your tank and place the mounting bracket (17) between the pump and your tank. Secure back onto your tank with the 4 machine screws provided. This bracket and adjustable bracket (23) will already be assembled together.
2. Connect the plumbing fittings together as the diagram shows. Use a good grade of thread sealant, or teflon tape, to connect all pipe threaded fittings together. Your (existing) handgun will be reconnected to fitting (20).
3. You will need to drill a 7/8" diameter hole in the top of your tank approximately where the bypass hose (14) bends into the tank, without kinks. (Clean out the tank of 'shavings' produced from drilling this hole) Place the grommet (21) into that hole then place the bypass hose through this grommet.
4. Remove the locknut on the nozzle elbow (19) and place the elbow through the end hole in bracket (23). Secure with (elbow) locknut. Place the nozzle screen (24) into the nozzle elbow. Thread the adaptor/elbow/tip (Items 3, 8, & 1) onto the nozzle.
5. Plumb the feeder hose (13) as shown. Use the tie strap (26) to hold the hose against the mounting bracket (23).
6. The adjustable arm (23) should be positioned for optimal spray performance. Once it is in your desired position, lock it in place with handle (22).
7. Thread the pressure gauge into the nylon tee (7).

Your boomless sprayer is now ready for testing/spraying.

Item No	Part Number	Qty	Description	List Price
1	1200PS	1	14' Boomless Nozzle	34.95
2	5005021	2	Nylon Adapter, 1/2" MNPT x 3/4" MGHT	.78
3	5005137	1	Poly Adapter, 11/16" UNF x 1/4" FNPT	2.23
4	5006035	1	5/16"-18 Hex Locknut	.50
5	5006209	2	Poly Knurled Swivel Nut, 3/4" FGHT	.70
6	5010113	1	Nylon "Tee" Fitting, 1/2" FNPT	5.40
7	5010193	1	Nylon Tee, 1/2" FNPT w/1/4" Port (Gauge)	7.95
8	5010242	1	Poly Street Elbow, 1/4" NPT	2.23
9	5011054	1	Nylon Close Nipple, 1/2" MNPT	.62
10	5011128	1	Nylon Reducing Nipple, 1/2" MNPT x 3/8" MNPT	.65
11	5016066	2	Garden Hose Washer	.20
12	5016114	1	Flatwasher, 1/4"	.25
13	5020251	1	Hose, 3/8"-1 Brd. x 24"	3.15
14	5020490	1	Hose, 3/8"-1 Brd. x 7 1/4"	1.25
15	5034154	1	H.H.C.S., 5/16"-18 x 5/8"	.25
16	5034578	1	Carriage Bolt, 5/16"-18 x 3/4" (short neck)	.25
17	5038785	1	Boomless Tank Mounting Bracket	
18	5051114	3	Hose Clamp (3/8"-1/2")	.63
19	5056094	1	Poly Elbow, 11/16" U.N.F. x 3/8" HB	1.46
20	5067016	1	Nylon Fitting, 1/2" MNPT x 3/8" HB	.65
21	5075022	1	Grommet (5/8" I.D.)	1.00
22	5088025	1	T-Knob, 5/16-18	1.00
23	5095256	1	Boomless Mount Arm	
24	5116160	1	Nozzle (Check Valve) Strainer, Red (50 Mesh)	3.86
25	5117168	4	#10-24 x 1" Phillips Truss Head Machine Screw	.25
26	5133094	1	Nylon Cable Tie	.25
27	5143188	2	Nylon Shut-Off Valve	3.14
28	5149034	2	Poly Swivel, 3/8" Hose Barb	.64
29	5167031	1	Gauge, Liquid-Filled, 0-100# p.s.i.	21.75

(List Prices are Subject to Change)