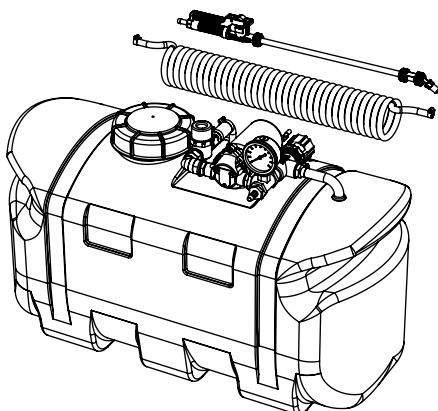


# OWNER'S MANUAL

## Model: AG25DLXRG

(25 Gallon Deluxe Lawn & Garden Spot Sprayer w/Coiled Hose)



**BEFORE RETURNING THIS PRODUCT  
FOR ANY REASON, PLEASE CALL**

**HOPKINSVILLE, KY: 800-637-7172**

**DOTHAN, AL: 800-227-4098**

**GREENWOOD, MS: 800-844-4524**

**IF YOU SHOULD HAVE A QUESTION OR EXPERIENCE A  
PROBLEM WITH YOUR AG SPRAY PRODUCT GIVE US A CALL.**

**BEFORE YOU CALL, PLEASE HAVE THE FOLLOWING  
INFORMATION AVAILABLE: SALES RECEIPT & MODEL  
NUMBER. IN MOST CASES, AN AG SPRAY EMPLOYEE  
CAN RESOLVE THE PROBLEM OVER THE PHONE.**

### General Information

Thank you for purchasing this product. The purpose of this manual is to assist you in operating and maintaining your lawn & garden spot sprayer. Please read it carefully, as it furnishes information which will help you achieve years of trouble-free operation.

### Warranty/Parts/Service

Products are warranted for one year from date of purchase against manufacturer or workmanship defects.

Commercial users have a 90 day warranty.

Your authorized dealer is the best source of replacement parts and service. To obtain prompt, efficient service, always remember to give the following information...

- Correct Part Description and/or part number.
- Model number/Serial number of your sprayer.

Part descriptions and part numbers can be obtained from the illustrated parts list section(s) of this manual.

Whenever you need parts or repair service, contact your distributor/dealer first. For warranty work, always take your original sales slip, or other evidence of purchase date, to your distributor/dealer.

### Technical Specifications

- 25 Gal. Corrosion-Resistant Polyethylene Tank
- 12 Volt Diaphragm Pump, 1.4 g.p.m. - 45 p.s.i.
- TriggerJet Handgun
- 15 Ft. Coiled Handgun Hose
- Bypass/Pressure Relief Valve (for pressure control)

### Assembly

Your sprayer has been mostly assembled at the factory. The only requirement will be for you to hook up your battery leads to a fully charged 12 Volt battery. The red wire must be connected to the "hot" lead, and the black wire should be connected to the ground.

### Operation

Your sprayer may be equipped with (2) ON/OFF switches. One may be on the wire assembly that you hook up to your battery, the other is on the pump itself, on the opposite end of the pressure switch. The "-" is the "ON" position and the "o" is the "OFF" position for the switches. Make sure both switches are depressed in the "-" position for operation.

Always fill the tank with a desired amount of water first, and then add the chemical slowly, mixing as you pour the chemical into the tank. You may use the handgun to spray into the solution in order to mix the chemical and water.

Initially begin spraying by opening the handgun. This will enable the air in the line to be purged through the handgun tip, while building pressure.

The pumping system draws solution from the tank, through the strainer/filter, and to the pump. The pump forces the solution under pressure to the handgun and/or boom nozzles.

- Open the handgun by squeezing the handle lever.
- Rotating the adjustable nozzle tip on the handgun will change the tip pattern from a straight stream to a cone pattern (finer mist).



[www.agspray.com](http://www.agspray.com)

1100 New Industry Lane Hopkinsville, KY 42240 P: 800-637-7172 F: 270-885-7392	104 Eastman Street Greenwood, MS 38930 P: 800-844-4524 F: 662-455-4442	1563 S. Oates Street Dothan, AL 36301 P: 800-227-4098 F: 334-673-1974
--	---	--

Form No. 1992 [5008289 (02/10)] Printed in the U.S.A.

## After Spraying

After use, fill the sprayer tank part way with water. Start the sprayer, and allow the clear water to be pumped through the plumbing system and out through the spray nozzles.

Refill the tank about half full with plain water and use FIMCO Tank Neutralizer and Cleaner, and repeat cleaning instructions above.

Flush the entire sprayer with the neutralizing/cleaning agent, then flush out one more time with plain water. Follow the chemical manufacturer's disposal instructions of all wash or rinsing water.

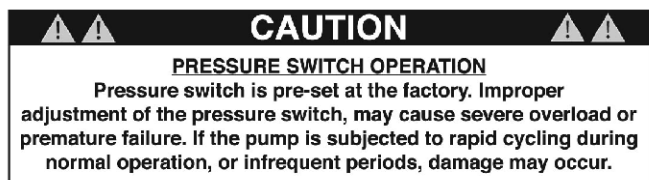
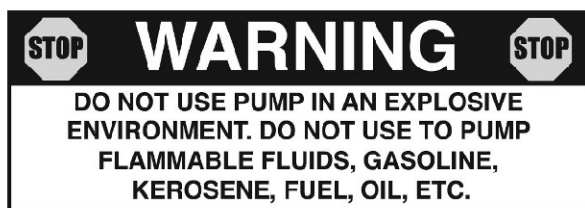
For the boom, (if applicable) remove the tips and screens from the nozzle assemblies. Wash these items out thoroughly. Blow the orifice clean and dry. If the orifice remains clogged, clean it with a fine bristle (NOT WIRE) brush, or with a toothpick. Do not damage the orifice. Water rinse and dry the tips before storing.

**WARNING: Some chemicals will damage the pump valves if allowed to soak untreated for a length of time! ALWAYS flush the pump as instructed after each use.**

## Winter Storage

Drain all water out of your sprayer, paying special attention to the pump, handgun, and valve(s). These items are especially prone to damage from chemicals and freezing weather.

The sprayer should be winterized before storage by pumping a solution of RV antifreeze through the entire plumbing system. This antifreeze solution should remain in the plumbing system during the winter months. When spring time comes and you are preparing your sprayer for the spray season, rinse the entire plumbing system out, clearing the lines of the antifreeze solution. Proper care and maintenance will prolong the life of your sprayer.



### (8000-543-250) BY-PASS PUMP:

1.4 gpm, Viton Valves, Santoprene Diaphragm, 1/4" FPT Adaptor mounted on switch port, 3/8" FPT ports no switch.

## Troubleshooting the Pump:

### Pump will NOT run:

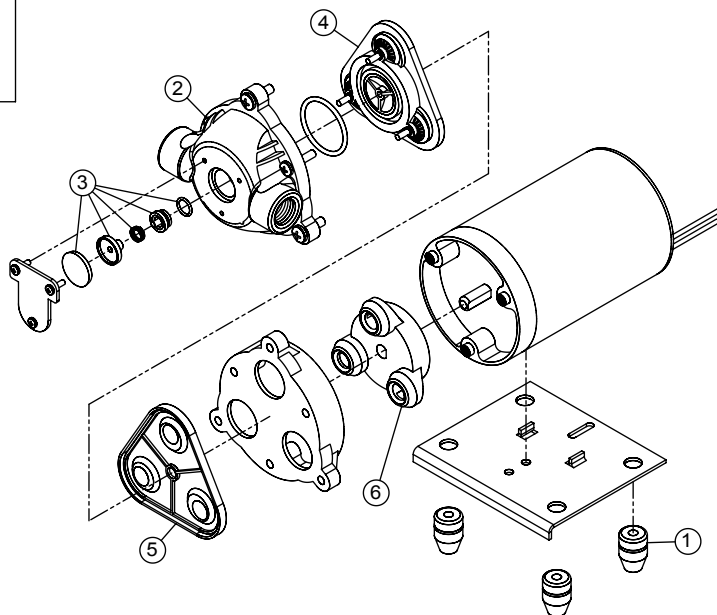
- Check inline fuse on the wires on the pump. (if applicable)
- Make sure on/off switch is in the 'on' position (-).
- Make sure you 12 volt source (battery) is fully charged.
- Insure a tight connection at the battery clips.

### Pump runs, but does not prime:

- Check line strainer (screen) in the tank, connected to the bottom of the intake tube. Periodically take the screen at this location out and clean it.
- Make sure the bypass line valve is closed, to allow the pressure to build up in your system. (If equipped with bypass)
- Unscrew the head portion of your pump and remove the check valve assembly from inside. You need to make sure the O-Ring comes out with this piece as well. (See the exploded view to help identify these components) These pieces can be cleaned which, in most cases, will help restore some, if not most, of your prime. Soak this check valve in a solution of hot, soapy water. A good name-brand dishsoap works well for this. A little bit of 'scrubbing' with perhaps an old toothbrush may be required to actually break up any build-up that may be on the check valve. Rinse off the pieces and replace them back into your pump. Reassemble the pump. Hook it back up and test.

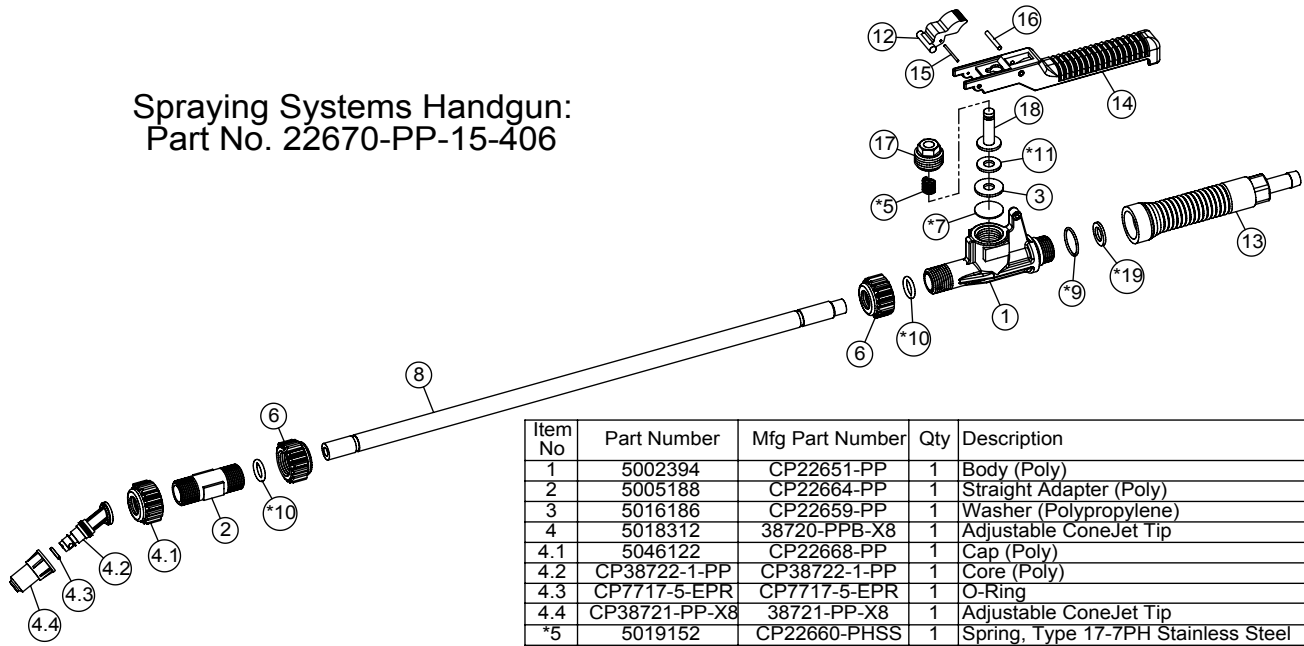
### 12 Volt Pump

SHURflo Model No: 8000-543-250



Item No	Part Number	Qty	Description	List Price
1	5075019	1	Pkg. (4) Grommets	2.99
2	5084089	1	Upper Housing	17.85
3	5168759	1	Check Valve Kit	10.25
4	5168760	1	Valve Assembly Kit	39.11
5	5168761	1	Diaphragm	17.60
6	5168762	1	Drive Assembly	30.10

## Spraying Systems Handgun: Part No. 22670-PP-15-406



- Maximum Operating Pressure of 150 PSI
- 15" Extension Wand

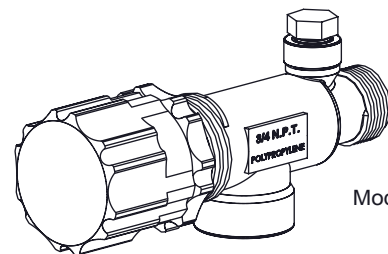
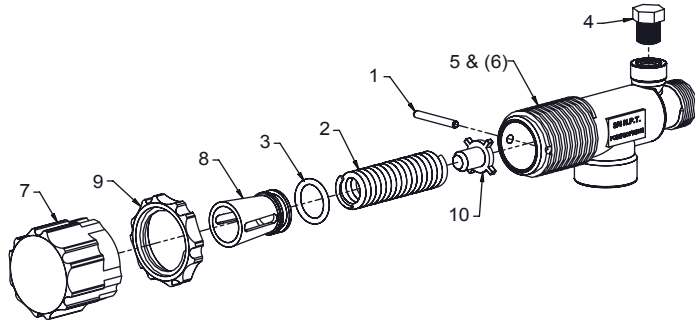
Spare Parts Kit (Includes all items marked with \*)  
(Spraying Systems Part No: PK-AB22670-PP-KIT)  
(FIMCO Part No: 7771187)  
[List Price = \$12.62]

Item No	Part Number	Mfg Part Number	Qty	Description	List Price
1	5002394	CP22651-PP	1	Body (Poly)	8.45
2	5005188	CP22664-PP	1	Straight Adapter (Poly)	1.75
3	5016186	CP22659-PP	1	Washer (Polypropylene)	2.20
4	5018312	38720-PPB-X8	1	Adjustable ConeJet Tip	6.40
4.1	5046122	CP22668-PP	1	Cap (Poly)	1.46
4.2	CP38722-1-PP	CP38722-1-PP	1	Core (Poly)	4.68
4.3	CP7717-5-EPR	CP7717-5-EPR	1	O-Ring	2.36
4.4	CP38721-PP-X8	38721-PP-X8	1	Adjustable ConeJet Tip	
*5	5019152	CP22660-PHSS	1	Spring, Type 17-7PH Stainless Steel	1.19
6	5046122	CP22668-PP	2	Cap (Poly)	1.46
*7	5063134	CP22661-VI	1	Diaphragm (Viton)	4.31
8	5065039	CP22663-15-FRP	1	Extension Tube (15") (22670 Handgun)	9.71
*9	5072306	CP7717-2-016-VI	1	O-Ring (Viton)	1.67
*10	5072307	CP7717-2-110-VI	2	O-Ring (Viton)	.89
*11	5072415	CP22676-NEO	1	Gasket (Neoprene)	1.43
12	5077031	CP22656-NY	1	Trigger Lock (Nylon)	1.83
13	5078161	CP22652-3/8-PP	1	Handle w/0.375in Shank	5.43
14	5092007	CP22655-PP	1	Trigger	3.26
15	5101129	CP22671-ZP	1	Groove Pin	1.15
16	5101130	CP22672-ZP	1	Groove Pin	1.15
17	5108060	CP22658-PP	1	Spring Retainer	2.20
18	5132054	CP22657-NY	1	Stem (Nylon - Gray)	1.68
*19	CP39334-VI	CP39334-VI	1	Gasket (Viton)	.99

(List Prices are Subject to Change)

## PISTON TYPE PRESSURE RELIEF/REGULATING VALVES

Bypasses excess liquid. Adjustable to maintain control of line pressure at any pressure within the valve operating range. Selected pressure setting firmly held in place by locknut. Extra large passages to handle large flows.



Model 23120

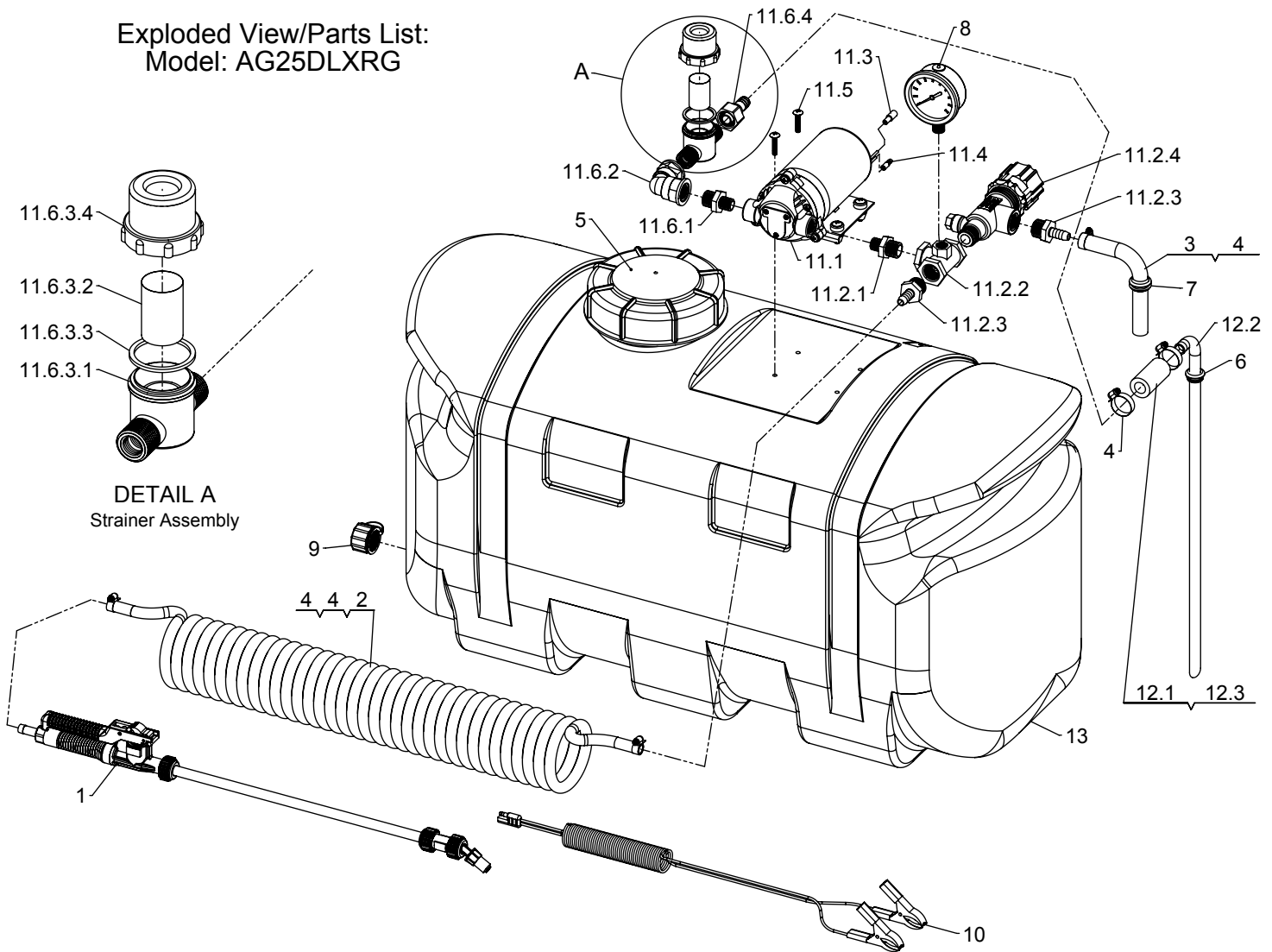
- Polypropylene with stainless steel spring
- Excellent chemical resistance
- EPDM O-Rings
- For pressure to 150 p.s.i.
- 1/4" port for pressure gauge
- Choice of 1/2" or 3/4" NPT (M) inlet & (F) outlet connections

FIMCO Number	Mfg Part Number	Description	List Price
5143199	23120-3/4-PP	3/4" Poly Valve	34.00
5143200	23120-1/2-PP	1/2" Poly Valve	34.00
5168717	PK-AB23120-KIT	Repair Kit, Items Marked **	16.76

Item No.	Part Number	Mfg Part Number	5143199 Qty	5143200 Qty	Description	List Price
1	**	CP23126-302SS	1	1	Retaining Pin	---
2	**	CP23127-302SS	1	1	Spring	---
3	**	CP7717-15-EPR	1	1	O-Ring, EPDM Rubber	---
4	---	---	1	1	Pipe Plug, 1/4" MNPT	---
5	---	CP23121-PP	1	-	Poly Body (3/4" NPT)	---
6	---	CP23128-PP	-	1	Poly Body (1/2" NPT)	---
7	5046270	CP23122-NY	1	1	Adjusting Cap, Nylon (Gray)	10.86
8	5108095	CP23124-PP	1	1	Spring Retainer	5.51
9	5110266	CP23123-PP	1	1	Lock Ring	5.82
10	5115078	CP23125-PP	1	1	Guide Seat	4.25

How to order: Specify valve number (Example: 23120-1/2-PP Polypropylene)

Exploded View/Parts List:  
Model: AG25DLXRG



Item No	Part Number	Qty	Description	List Price
1	22670-PP-15-406	1	TriggerJet Spray Gun	43.18
2	5020479	1	15 Ft. Coiled Hose	9.98
3	5020490	1	Hose, 3/8"-1 Brd. x 7 1/4"	1.25
4	5051114	4	Hose Clamp (3/8"-1/2")	.63
5	5058189	1	5" Lid (NO Lanyard)	10.50
6	5075018	1	Grommet	1.00
7	5075022	1	Grommet (5/8" I.D.)	
8	5167031	1	Gauge, Liquid-Filled, 0-100# p.s.i.	21.75
9	5274373	1	Drain Plug Cap, Tether, and Washer Assembly	2.95
10	5277040	1	Battery (Power) Cable (10 Ft. - 14 Gauge)	
11	5277243	1	Pump and Plumbing (PPDLXRG)	
11.1	8000-543-250	1	SHURflo Pump; 12V, 45 PSI, 1.4gpm, Bypass	127.34
11.2	5277241	1	Plumbing Bypass Assembly	
11.2.1	5011128	1	Nylon Reducing Nipple, 1/2" MNPT x 3/8" MNPT	.50
11.2.2	5010193	1	Nylon Tee, 1/2" FNPT w/1/4" Port (Gauge)	3.71
11.2.3	5067016	2	Nylon Fitting, 1/2" MNPT x 3/8" HB	.50
11.2.4	5143200	1	Pressure Relief Valve (1/2" NPT)	34.00
11.3	5157185	1	Female Bullet Terminal	.41
11.4	5157186	1	Male Bullet Terminal	.18
11.5	5117168	4	#10-24 x 1" Phillips Truss Head Machine Screw	.25
11.6	5277013	1	Pump Suction Assembly	
11.6.1	5011128	1	Nylon Reducing Nipple, 1/2" MNPT x 3/8" MNPT	.50
11.6.2	5010176	1	Nylon Elbow, 1/2" FNPT x 1/2" FNPT	3.72
11.6.3	3350-0079F	1	Nylon Line Strainer	12.25
11.6.3.1	5116255	1	Strainer Cap	8.10
11.6.3.2	5116177	1	Screen (50 mesh S.S.)	2.15
11.6.3.3	5072356	1	Strainer Gasket	2.40
11.6.3.4	5058072	1	Strainer Bowl	3.65
11.6.4	5002502	1	Fitting, 1/2" FNPT x 1/2" Swivel HB	1.05
12	5277244	1	Pump Intake Assembly (25 Gal)	
12.1	5020494	1	Hose, 1/2"-1 Brd. x 2"	.49
12.2	5100532	1	Intake Tube, 1/2" O.D. x 3/8" I.D. x 18 1/4"	
12.3	5051114	1	Hose Clamp (3/8"-1/2")	.63
13	TA25W	1	25 Gallon Tank (White)	72.64

(List Prices are Subject to Change)